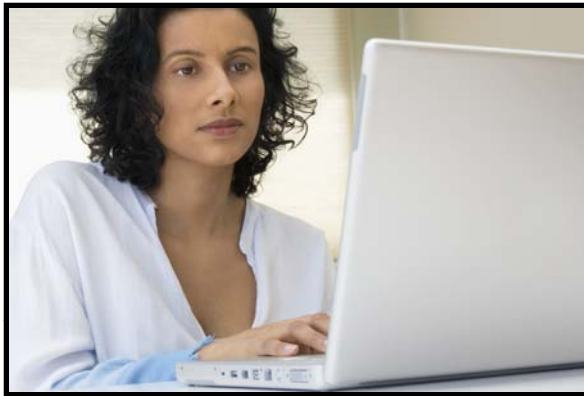


Do you have any of the following skills?

Computer



Industrial / Manufacturing



Customer Service



Would you like to transfer your skills into one of the following medical facilities?

<p>Cleveland Clinic Metro Health Hospitals Eliza Bryant Village</p>	<p>Jennings Center for Older Adults Southwest General Health Center Visiting Nurse Association</p>
--	---

Then the **Career Advancement Skills** Workshop may be for you.
Ask an Employment Connection Staff member about the **CAS** Workshop today!

**Interested in a workshop that might increase your chances of being hired by a major Cleveland hospital or medical facility?
For more information about Healthcare Careers Initiative/Career Advancement Skills Workshop please contact:**

Elaine Freeman, Bolivar
Employment Connection
efreeman@city.cleveland.oh.us
(216) 664-2790

Patricia Valenti, Brookpark
Employment Connection
VALENP@odjfs.state.oh.us
(216) 898-8361

Marquita Rockamore, Bolivar
Employment Connection
mrockamore@city.cleveland.oh.us
(216) 664-2134

Joan McNary, Brookpark
Employment Connection
joan.mcnary@ula-ohio.org
216-898-8358

OR ANY JOB PLACEMENT REPRESENTATIVE OR CAREER MANAGER
You MUST meet the following initial requirements:

- Attend an Employment Connection Orientation
- Take a math and reading test (TABE)-scores, goal is 9th grade proficiency or better
- Electronically submit a resume to any Employment Connection
- Take a Mavis-Beacon typing test and print the certificate
- Take a Medical Terminology quiz
- Computer Proficiency Test
- Behavioral Style Interview

Members who have taken this workshop have been hired as appointment setters, environmental service workers, S.T.N.A.s, Medical Secretaries, LPN and R.N.s, Third Class Engineers, Program Analyst, Patient Transporters, Accountants, Telecommunication Operators, Patient Financial Service Coordinators, etc



Career Advancement Skills Workshop Schedule for 2010

Dates	Location
January 11 th – 15 th	Employment Connection Bolivar
January 25 th – 29 th	Employment Connection Brookpark
February 8 th – 12 th	Employment Connection Bolivar
February 22 nd – 26 th	Employment Connection Brookpark
March 8 th – 26 th	Employment Connection Bolivar
March 22 nd – 26 th	Employment Connection Brookpark
April 12 th – 16 th	Employment Connection Bolivar
April 26 th - 30 th	Employment Connection Brookpark
May 10 th – 14 th	Employment Connection Bolivar
May 24 th – 28 th	Employment Connection Brookpark
June 14 th – 18 th	Employment Connection Bolivar
June 21 st – 25 th	Employment Connection Brookpark
July 12 th – 26 th	Employment Connection Bolivar
July 26 th – 30 th	Employment Connection Brookpark
August 9 th – 13 th	Employment Connection Bolivar
August 23 rd – 27 th	Employment Connection Bolivar
September 13 th – 17 th	Employment Connection Bolivar
September 27 th – October 1 st	Employment Connection Brookpark
October 25 th – 29 th	Employment Connection Brookpark
November 8 th – 12 th	Employment Connection Bolivar
November 29 th – December 3 rd	Employment Connection Brookpark
December 13 th – 17 th	Employment Connection Bolivar